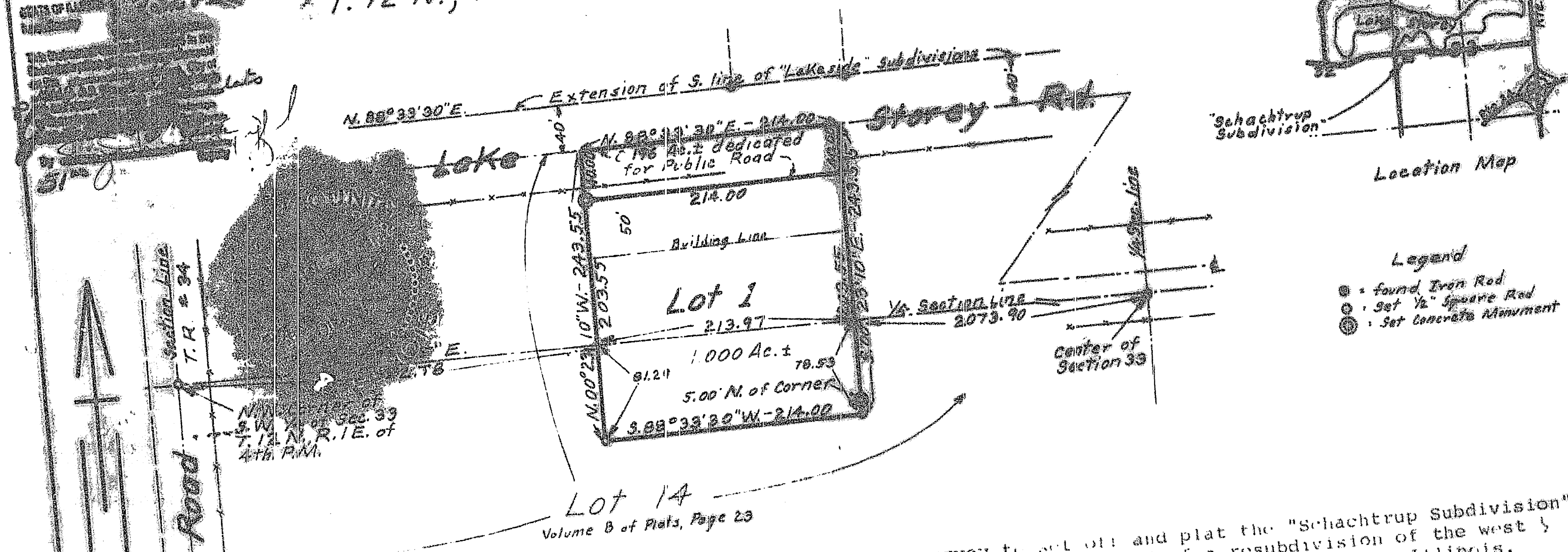


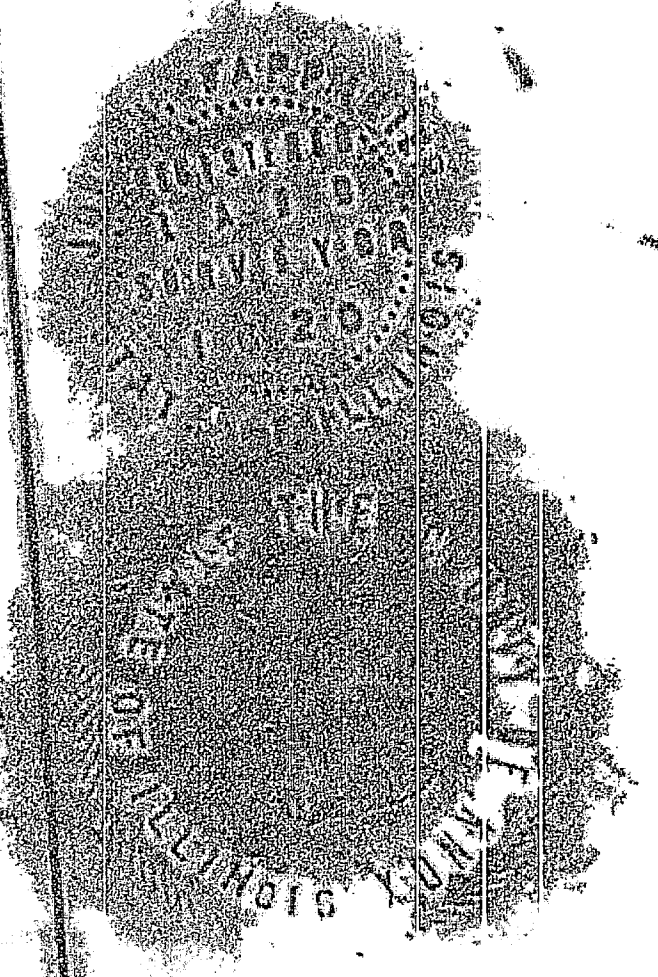
DOCUMENT NO. 732716 Filed for Record in Recorder's Office of Knox
 County, Illinois on August 11, 1986 at 3:20 O'clock P. M.

"Schachtrup Subdivision"
 A Subdivision of part of Lot 14 of a Revenue Plat of
 1928 of a Resubdivision of the West 1/2 of Section 33
 T. 12 N., R. 1 E., of the 4th P.M., Knox County, Illinois



I do hereby certify that I made a survey to set off and plat the "Schachtrup Subdivision", a subdivision of part of Lot 14 of the Revenue Plat of 1928 of a resubdivision of the west 1/2 of Section 33, T. 12 N., R. 1 E. of the Fourth Principal Meridian, Knox County, Illinois. The annexed plat as a true representation of the survey with measurements in feet and decimal parts thereof. No part of the property included in this survey is situated within 500 feet of any surface drain or watercourse serving a tributary area of 640 acres or more.

Witness my Signature and Seal
 this 21st day of April, 1986
 John H. Pappemeier
 John H. Pappemeier
 Illinois Land Surveyor #1620



STATE OF ILLINOIS) SS
 COUNTY OF KNOX)
 I, Yvonne Tubb, County Clerk of Knox County, Illinois, do hereby certify that I have examined the Tax Records of the said County concerning the real property included in the annexed plat, and I find no delinquent General Taxes, no delinquent Special Assessments, and no redeemable Tax Sales against any of the land included in the annexed plat.
 Given under my Hand and the Seal of Knox County at Galesburg, Illinois this 16th day of May, 1986.

Yvonne Tubb
 County Clerk

STATE OF ILLINOIS) SS
 COUNTY OF PEORIA)
 I, Francis B. Schachtrup, certify that I am the Trustee under the Last Will and Testament of Herman J. Schachtrup, deceased, and that I have caused the land included in the "Schachtrup Subdivision" to be surveyed and platted as shown thereon for the purpose of having the plat recorded as required by law and acknowledge that the survey and plat are correct to the best of my knowledge and belief and I further dedicate the roadway as designated on the plat to the public as a public road.
 In Witness whereof, I do hereunder set my Hand and Seal this 5th day of August, 1986.

Francis B. Schachtrup

STATE OF ILLINOIS) SS
 COUNTY OF PEORIA)
 I, *Jan Van Beveren*, a Notary Public in and for the County aforesaid, do hereby certify that Francis B. Schachtrup, who is known to me to be the same person whose name is affixed to the foregoing instrument, appeared before me this day in person as her free and voluntary act for the purposes therein set forth.
 Given under my Hand and Notarial Seal this 5th day of August, 1986

Jan Van Beveren Notary Public

STATE OF ILLINOIS) SS
 COUNTY OF KNOX)
 The annexed plat of the "Schachtrup Subdivision" was approved by the Knox County Supervisor of Assessments this 11th day of August, 1986.

John L. Matherson
 Supervisor of Assessments
 The annexed plat was reviewed and approved by the Knox County Plat Officer this 11th day of August, 1986.

STATE OF ILLINOIS) SS
 COUNTY OF KNOX)
 CITY OF GALESBURG)
 The annexed plat was reviewed and approved by the Galesburg City Council this 27th day of May, 1986.

John L. Matherson Chairman
 approved by the City Council of Galesburg this 27th day of May, 1986.
John L. Matherson City Clerk